

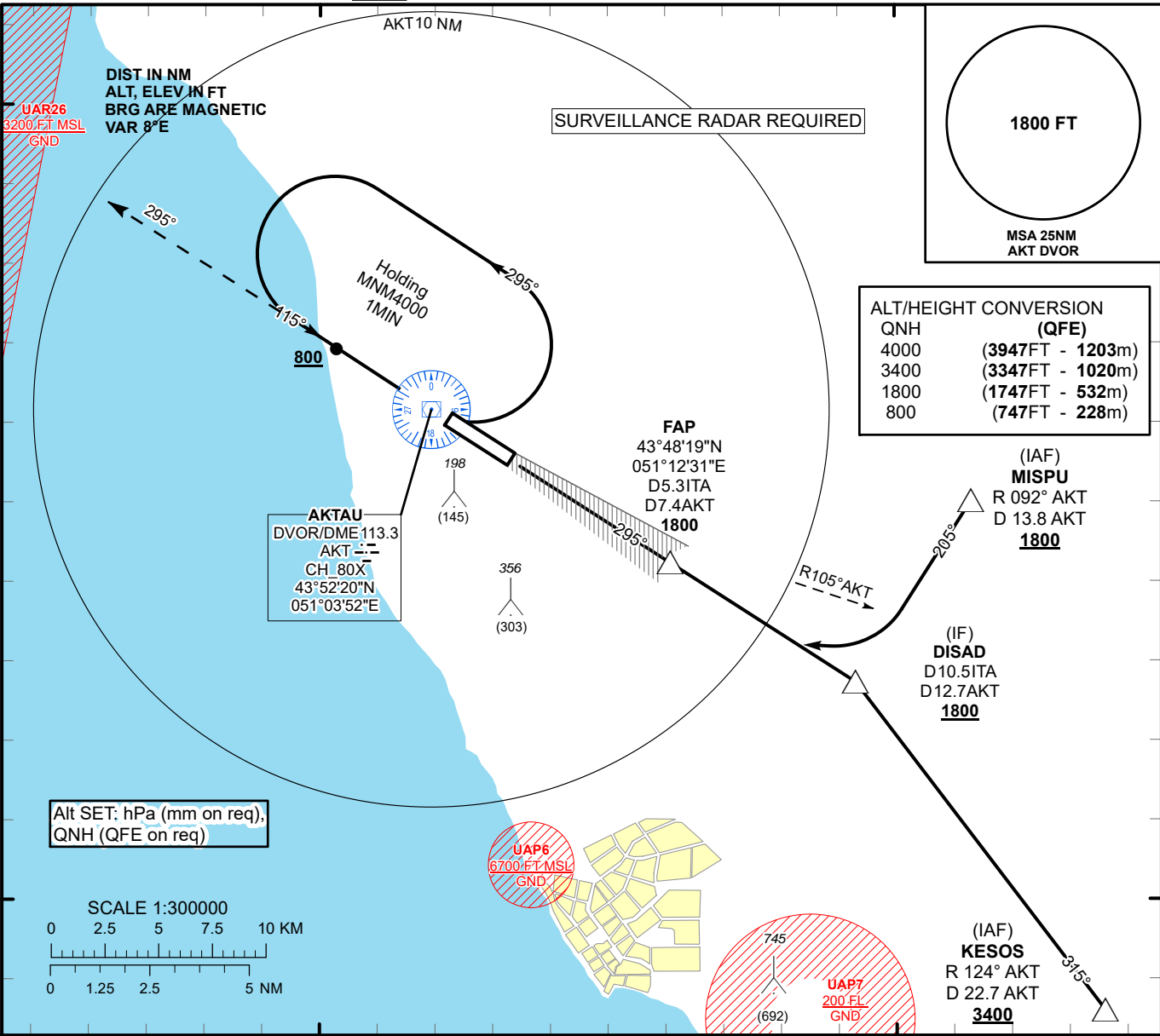
INSTRUMENT
APPROACH
CHART - ICAO

ILS
LLZ 111.1
ITA 400
GP 331.7
CH 48X

AERODROME ELEV **75 FT**
HEIGHTS RELATED TO
THR RWY 29 - ELEV **53 FT**

AKTAU TOWER 120.7
AKTAU ATIS (EN) 130.1
AKTAU ATIS (RU) 126.2

AKTAU
ILS/DME
RWY 29



TRANSITION ALT 10000 FT

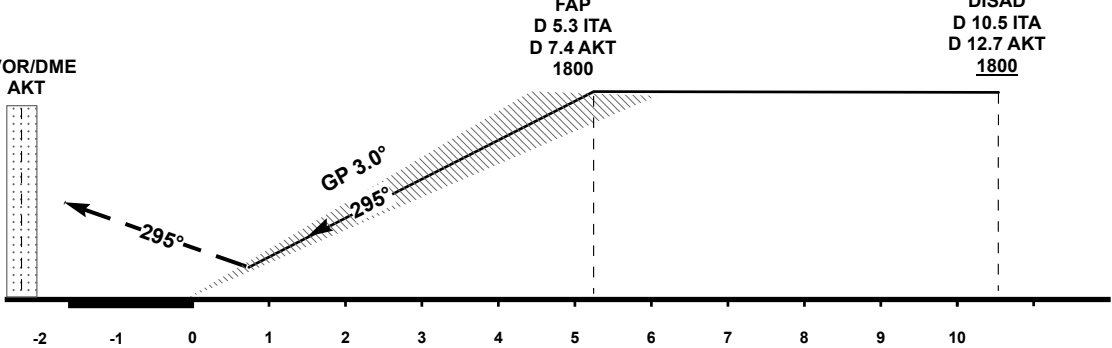
MISSED APPROACH

Climb on track 295° to 1800.
After passing 800 radar
vectoring will be provided.
RADIO FAILURE:
In the case of RCF
climb on track 295° to 1800
outbound to 5.0 AKT.
Turn right, climb to 4000
to AKT and join to
holding pattern.

DVOR/DME
AKT

ILS RDH 52

ELEV 53
THR RWY 29



Aircraft Category		A	B	C	D	DIST to THR DME ITA	NM	0.6	1	2	3	4	5.2
Straight-in Approach OCA/H						DME AKT	NM	2.8	3.2	4.2	5.2	6.2	7.4
	CAT I	256(203)	266(213)	276(223)	286(233)	ALTITUDE	FT	307	424	745	1068	1392	1800
							HEIGHT	FT	254	371	692	1015	1339
DME ITA ZERO RANGED TO THR RWY 29													
Aerodrome Operating Minima DH ft x RVR(CMV)	CAT I												
						GS	Kt	80	100	120	140	160	180
						Desc.Rate (5.2%)	ft/min	420	530	630	740	840	950

CHANGE: ALT IAF, IF, editorial.

AKTAU
ILS/DME

AERONAUTICAL DATA TABULATION

ILS approach to RWY29 from MISPU, DISAD, KESOS	
Fix/point	Coordinates
AKT DVOR/DME	43° 52' 20.3"N 051° 03' 51.9"E
ITA D5.3 AKT D7.4 (FAP)	43° 48' 19.1"N 051° 12' 30.7"E
MISPU (IAF) R092° AKT D13.8	43° 50' 01.9"N 051° 22' 37.0"E
DISAD (IF) AKT D12.7	43° 45' 28.9"N 051° 18' 35.4"E
KESOS (IAF) R124° AKT D22.7	43° 37' 13.0"N 051° 27' 13.0"E
THR RWY 29	43° 51' 09.72"N 051° 06' 24.49"E
ITA LOC	43° 52' 18.6"N 051° 03' 55.5"E